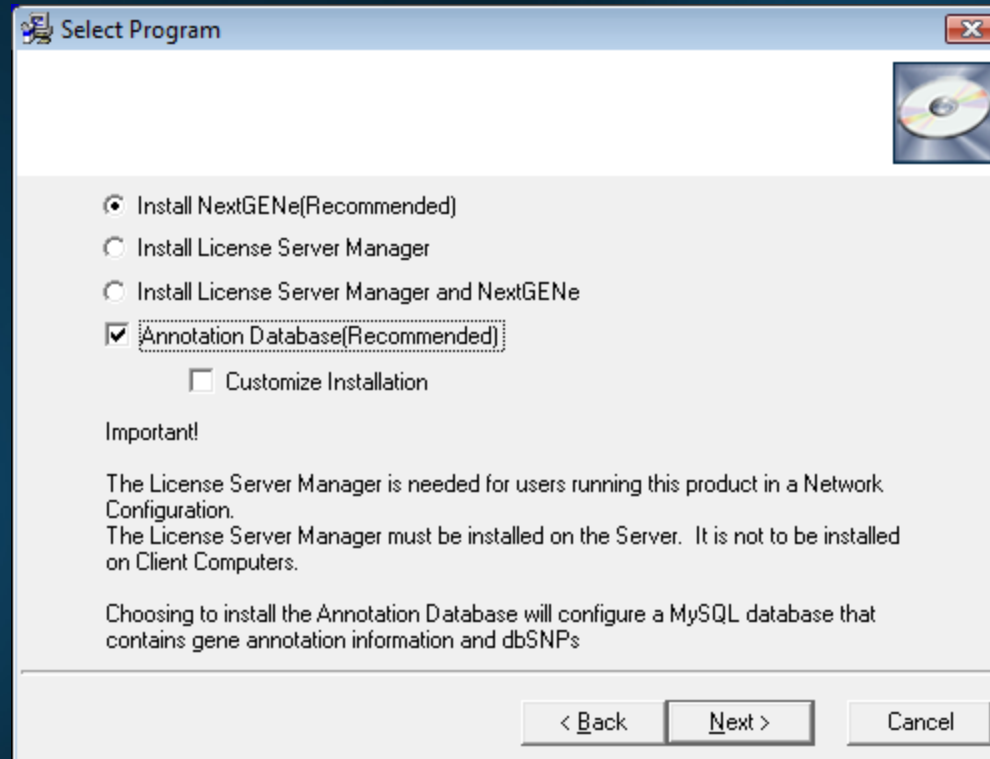




NextGENe[®]

Local Version Installation Guide

1. Log on to the computer as a Local Administrator. In order to meet User Account Control settings, you may also need to right-click on the NextGENe setup and choose Run As Administrator.
2. Choose to install NextGENe.



1. Open NextGENe.
Note: Log on to the computer as a Local Administrator. In order to meet User Account Control settings, you may also need to right-click on the “Register” shortcut and choose Run As Administrator.
2. For Local Installation, select Register Local Version.
3. Input your Account, Password and Email and click Register.
4. Click OK when prompted with successful registration.
5. Open NextGENe.

