



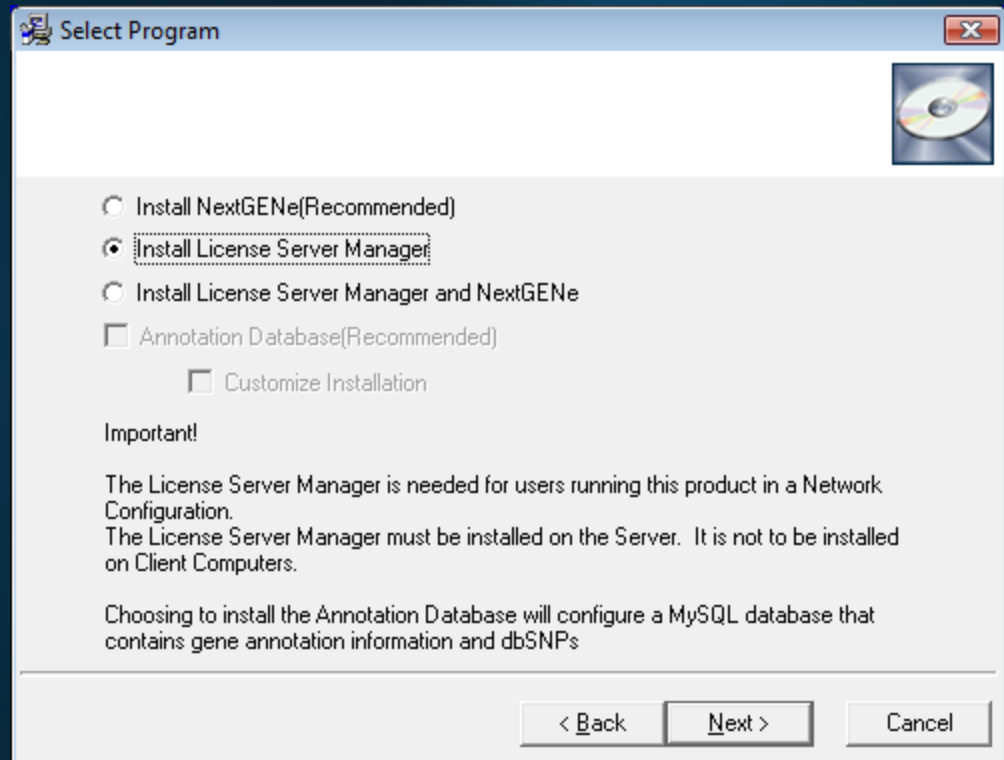
# NextGENe<sup>®</sup>

**Network Upgrade Guide for  
License Server Manager**

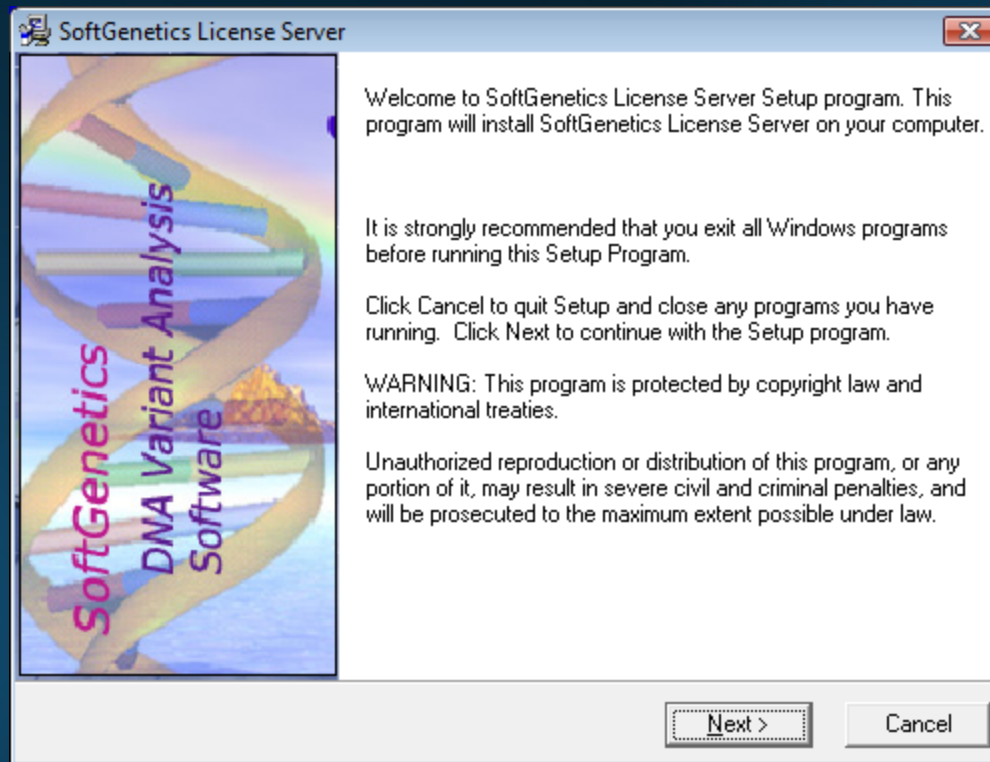


# Update License Server Manager on Server Computer

1. Log on to the Windows Server as a Local Administrator. In order to meet User Account Control settings, you may also need to right-click on the NextGENe setup and choose Run As Administrator.
2. Choose to Install License Server Manager.




1. Click Next to Install License Server.
2. When complete, choose to Launch License Server.

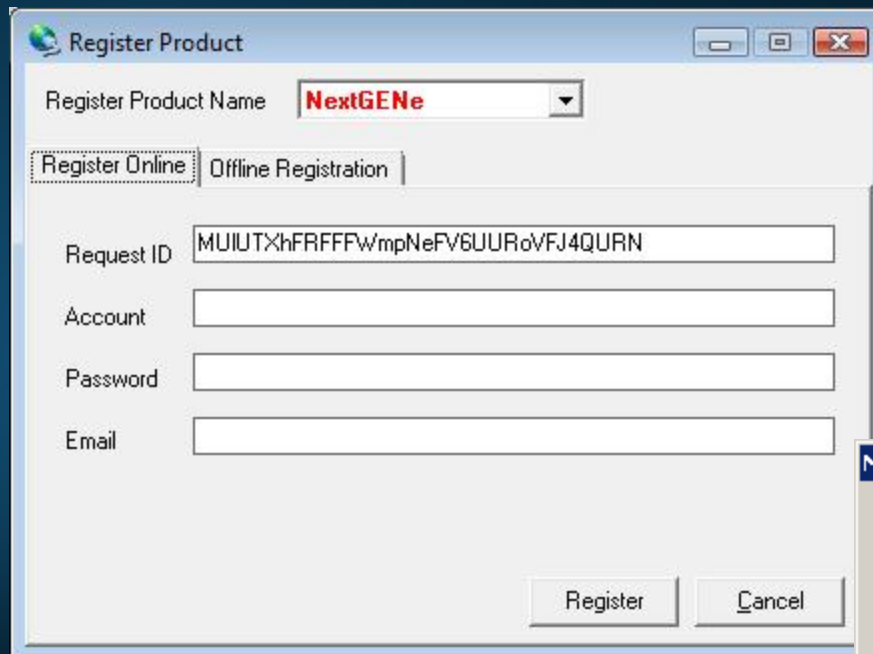




## Register License Server Manager for NextGENe

- This is needed only when the valid period is expired.
- If the previous version of NextGENe was running on clients without any problems, then this step is not necessary

1. Open License Server Manager  from the Icon Tray by clicking on LSM icon in System Tray
2. Register License Server for NextGENe by clicking on “Register” from the Help menu
3. Select “NextGENe” as Product  
Input your Account, Password and Email and click Register
4. You will be prompted with a message to restart License Server Manager for the changes to take effect



Register Product

Register Product Name: **NextGENe**

Register Online | Offline Registration

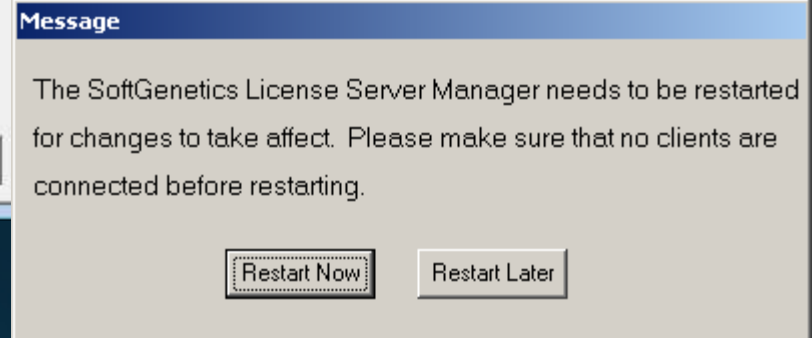
Request ID: MUIUTXhFRFFFWmpNeFV6UURoVfJ4QURN

Account:

Password:

Email:

Register Cancel



Message

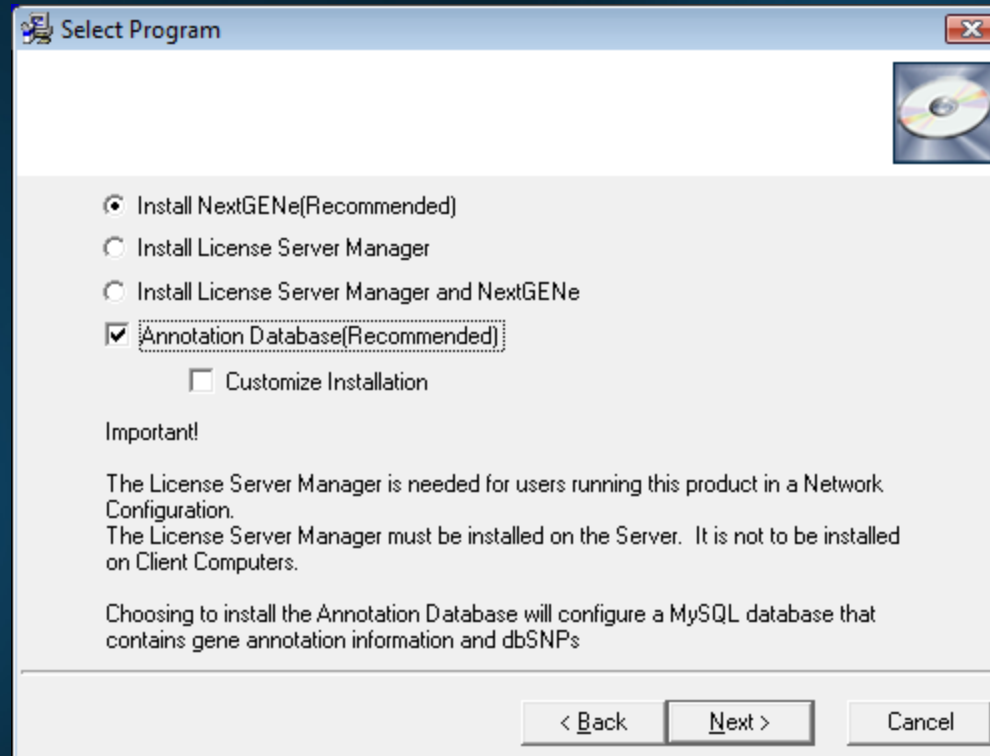
The SoftGenetics License Server Manager needs to be restarted for changes to take affect. Please make sure that no clients are connected before restarting.

Restart Now Restart Later




Install NextGENe on Server or Client(s)

1. Log on to the client computer as a Local Administrator. In order to meet User Account Control settings, you may also need to right-click on the NextGENe setup and choose Run As Administrator.
2. Choose to install NextGENe.



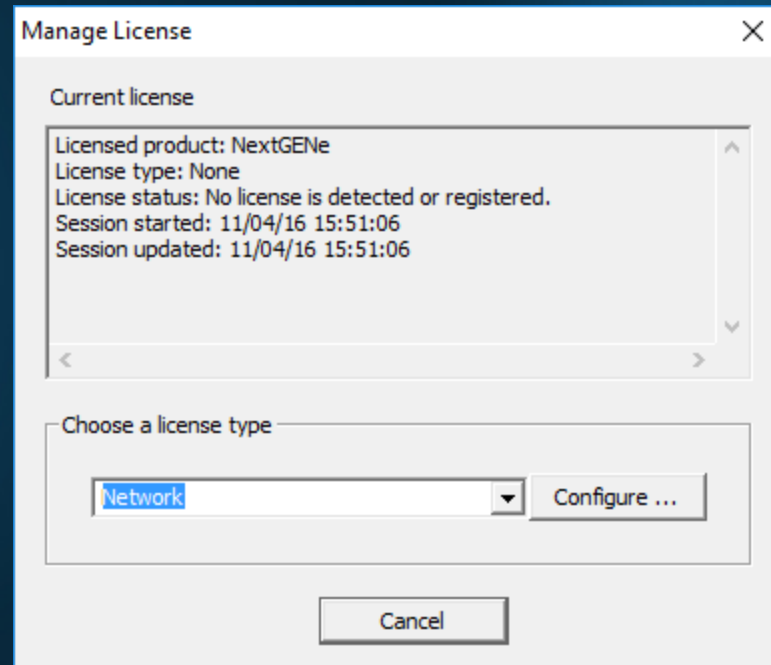
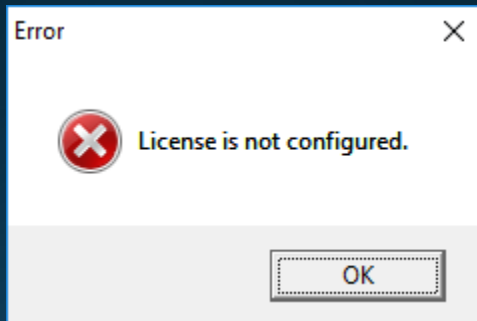




NextGENe will now work on  
previously configured client  
computers

- To configure new client computers, continue with next steps

1. Open NextGENe. “License is not configured” message will appear.
2. Click OK.
3. Choose Network type and click Configure.



1. Input host name or IP Address.
2. Click Connect. Message will show “Succeeded”.
3. Click OK.
4. NextGENe will automatically open if connection is properly established and a license is available.

